

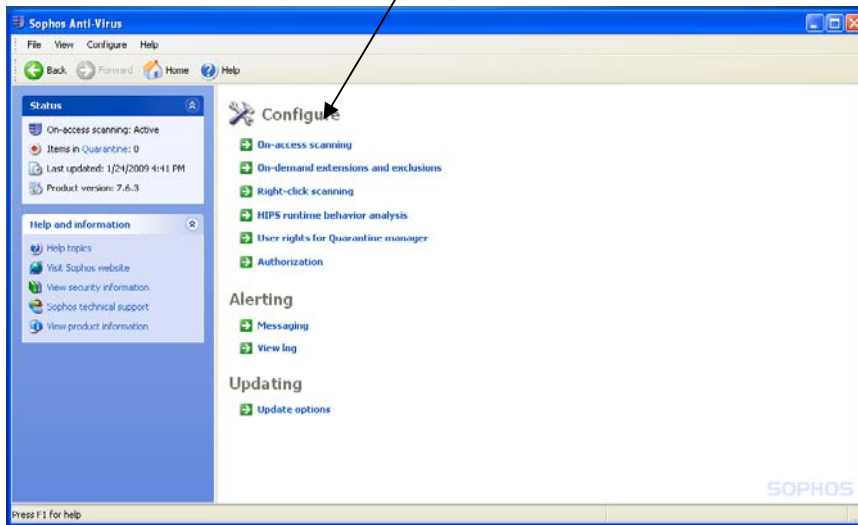
# Configuring Sophos Anti-Virus

## *An illustrated guide to configuring Sophos AntiVirus*

1. Right-click on the blue Sophos shield in the Windows taskbar and Select “Open Sophos Anti-Virus”

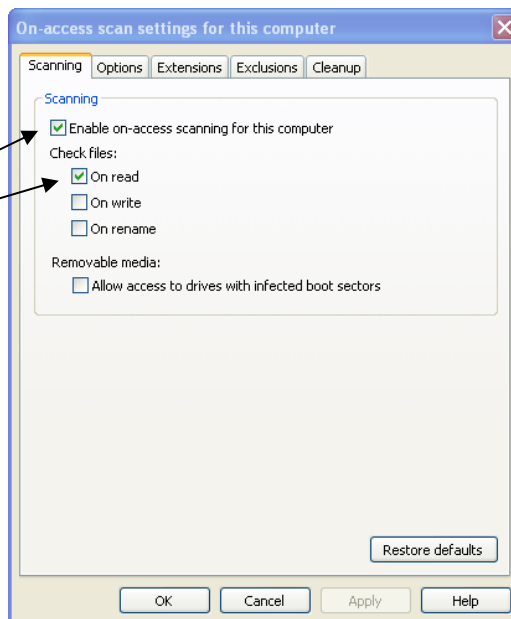


2. Now, you must configure the scanning options. Under the CONFIGURE section, click on “ON-ACCESS SCANNING” and the “On-access scan settings for this computer” dialog box will appear. Below are the settings you should use for ON-ACCESS SCANNING:

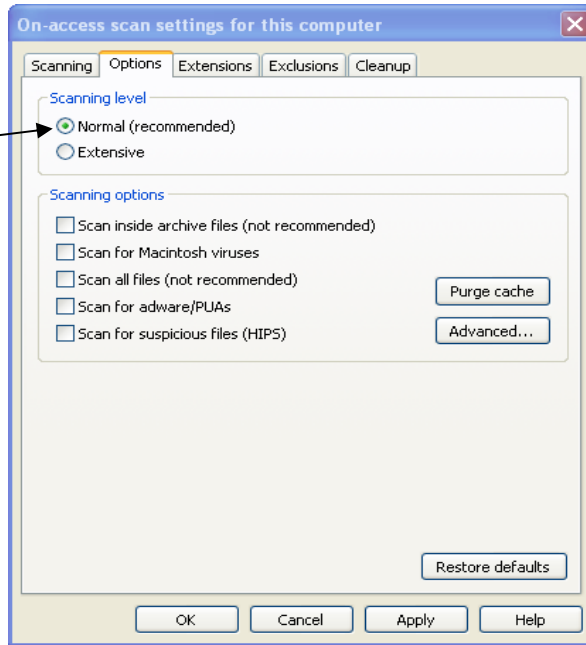


Scanning TAB (right)

ENABLE ON-ACCESS SCANNING FOR THIS COMPUTER ON READ



**Options TAB Scanning Level**  
Normal



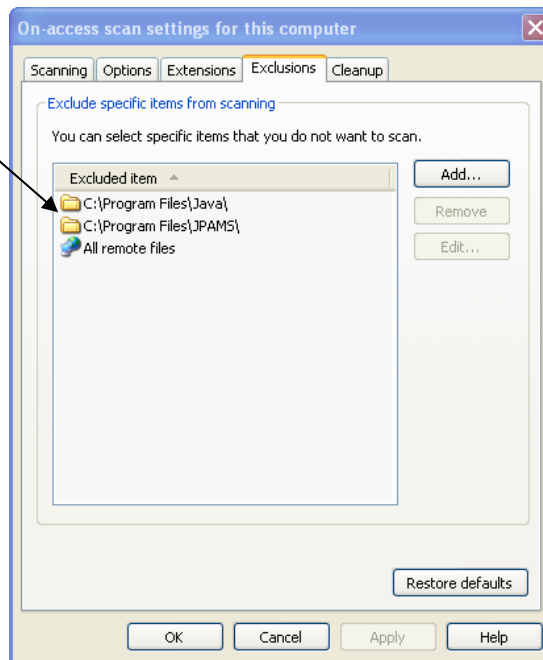
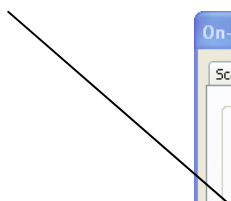
**Exclusions TAB**

Exclude specific items from scanning (Add the following)

C:\Program Files\jpams

C:\Program Files\Java

All Remote Files



**Cleanup TAB (right)**

Viruses/spyware

Automatically clean up items that contain virus/spyware

Delete

